



# JOBS FACT SHEET

February 2016

# + 242 K

Predictions		
ADP	214,000	
Consensus (Dow Jones)	200,000	
Data		
	Current	Previous
Employer Survey	242,000	151,000
Household Survey	530,000	615,000
Unemployment Rate	4.9%	4.9%
Under-employment rate (U6)	9.7%	9.9%
4-Week Rolling Average UI Initial Claims	270,250	272,000
Change in workforce	555,000	502,000
Workforce participation rate	62.9%	62.7%
Long-Term Unemployed	2.2 million	2.1 million

Average Weeks Unemployed	29.0	28.9
--------------------------	------	------

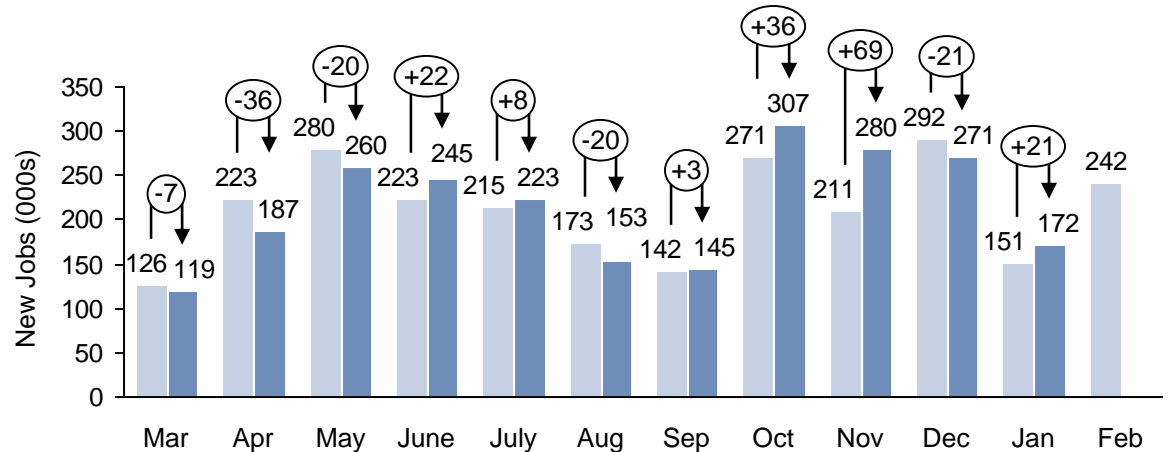
	Current
Unemployment if participation rate was at demographic trend	8.0%
Number of "missing workers"	4.9 million
Average Job Growth In 2016	207,000
Lowest Election-Year Job Growth When An Incumbent Party Won ('12)	184,000

\*Note: HPS's analysis of job growth trends during previous economic expansions and election years can be found [here](#). Establishment survey data has been revised as a result of the annual benchmarking process and the updating of seasonal adjustment factors.

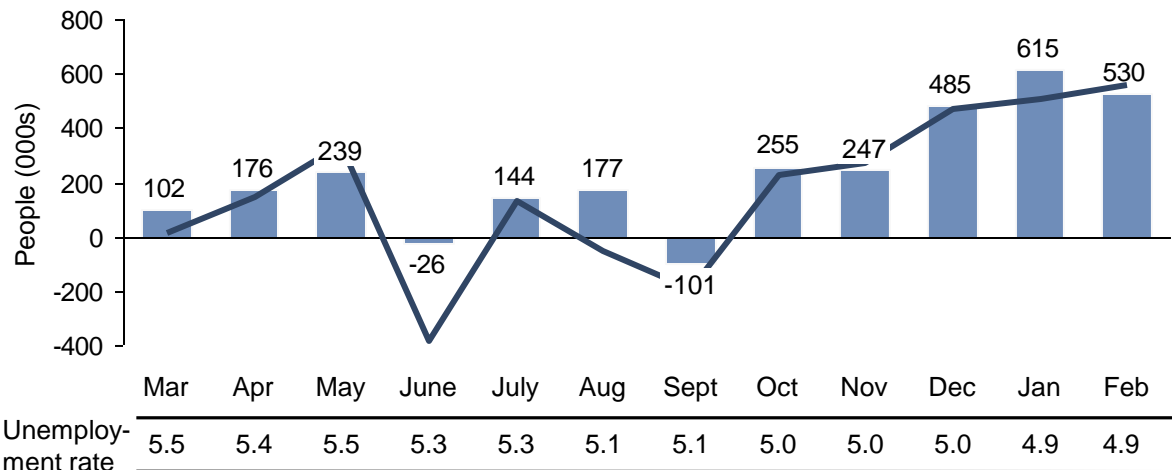
Household survey data for the previous month of January reflects updated population estimates.

SOURCES: BLS, DOL, HPS

**Employer Survey (CES)\*** Original CES Survey Revised CES Survey Revisions



**Household Survey (CPS)** Employment Change Work Force Change



Note: The unemployment rate drops when the amount of new jobs (change in employment) is greater than the change in the labor force