



JOBS FACT SHEET

March 2016

+ 215 K

Predictions		
ADP	200,000	
Consensus (Dow Jones)	213,000	
Data		
	Current	Previous
Employer Survey	215,000	242,000
Household Survey	246,000	530,000
Unemployment Rate	5.0	4.9%
Under-employment rate (U6)	9.8%	9.7%
4-Week Rolling Average UI Initial Claims	263,250	259,750
Change in workforce	396,000	555,000
Workforce participation rate	63.0%	62.9%
Long-Term Unemployed	2.2 million	2.2 million

Average Weeks Unemployed	28.4	29.0
--------------------------	------	------

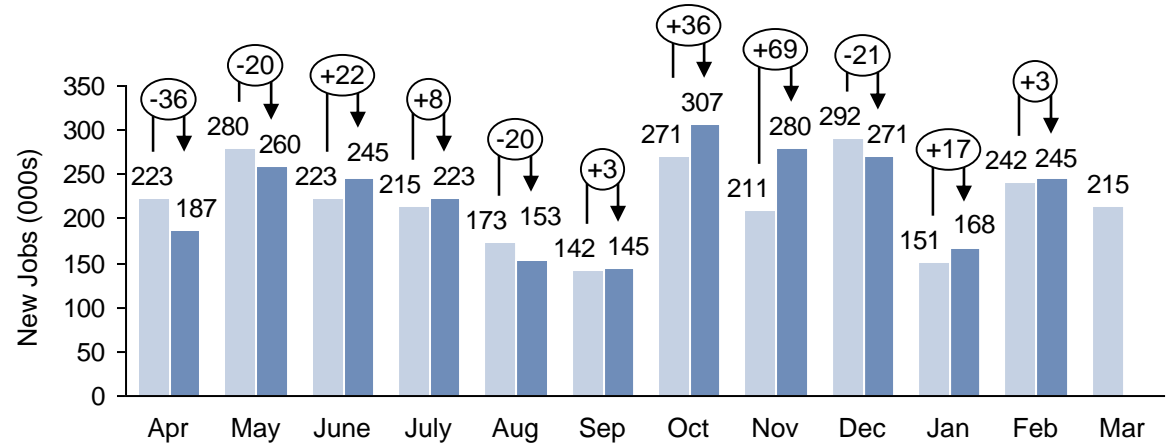
Analysis		Current
Unemployment if participation rate was at demographic trend	7.9%	
Number of "missing workers"	4.5 million	
Average Job Growth In 2016	209,000	
Lowest Election-Year Job Growth When An Incumbent Party Won ('12)	184,000	

*Note: HPS's analysis of job growth trends during previous economic expansions and election years can be found [here](#). Establishment survey data has been revised as a result of the annual benchmarking process and the updating of seasonal adjustment factors.

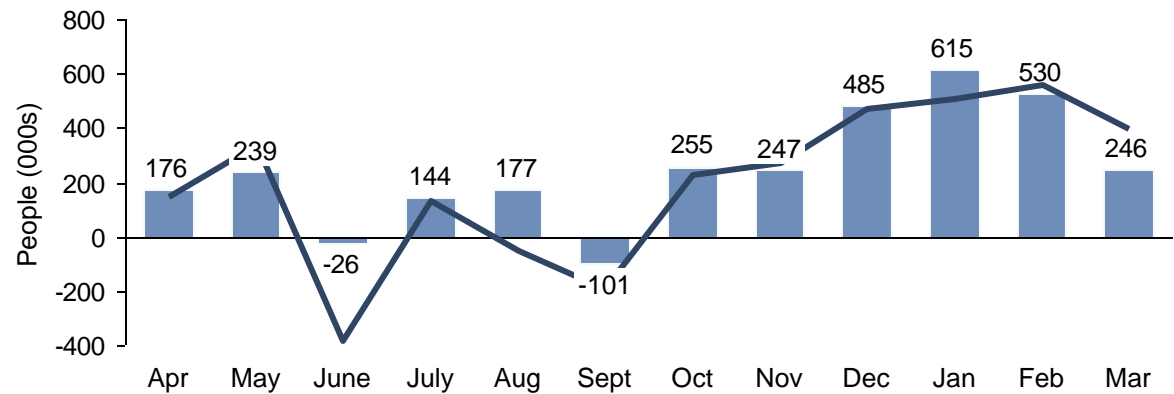
Household survey data for the previous month of January reflects updated population estimates.

SOURCES: BLS, DOL, HPS

Employer Survey (CES)* Original CES Survey Revised CES Survey Revisions



Household Survey (CPS) Employment Change Work Force Change



Month	Unemployment rate
Apr	5.4
May	5.5
June	5.3
July	5.3
Aug	5.1
Sept	5.1
Oct	5.0
Nov	5.0
Dec	5.0
Jan	4.9
Feb	4.9
Mar	5.0

Note: The unemployment rate drops when the amount of new jobs (change in employment) is greater than the change in the labor force