



# JOBS FACT SHEET

June 2017

# +222 K

### Predictions

ADP	158,000
Consensus (Dow Jones)	173,000

### Jobs

	Current	Previous
Employer Survey	222,000	138,000
Household Survey	245,000	-233,000
Unemployment Rate	4.4%	4.3%
U6-Unemployment Rate	8.6%	8.4%
4-Wk Avg UI Initial Claims	243,000	242,250
Long-Term Unemployed	1.7 million	1.7 million

### Labor Force

	Current	Previous
Work Force Change	361,000	-429,000
Participation Rate	62.8	62.7

### Wages

	Current	Previous
YoY Percent Change In Avg Hourly Earnings	2.5%	2.4%
Avg Weekly Earnings	\$905.6	\$901.6

### Analysis

Change In 25-54 Employment-Pop Ratio Under Trump	+0.3
--	------

Net Jobs Added Under Trump	863,000
----------------------------	---------

Average Monthly Job Growth Under Trump	172,600
--	---------

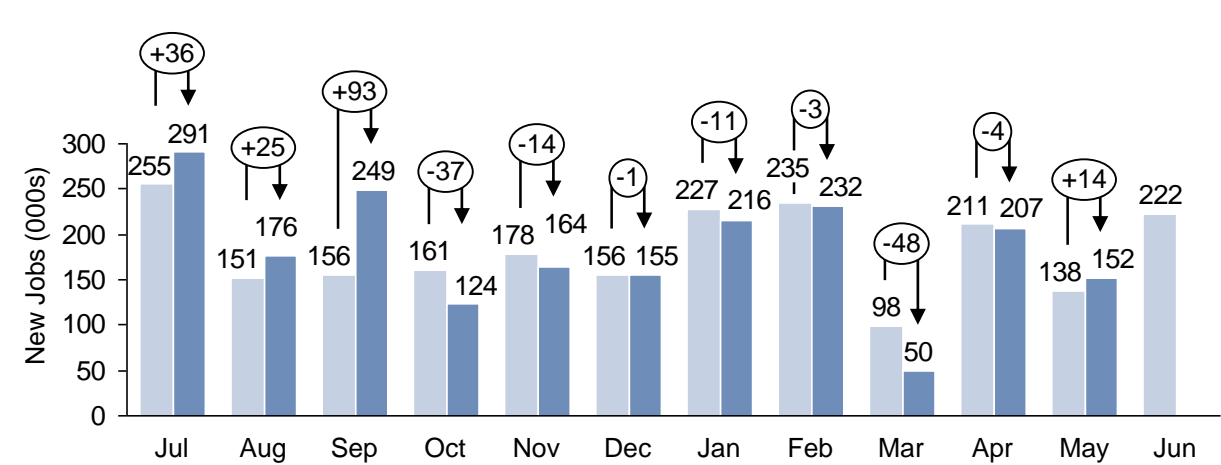
Jobs Needed Per Month For Presidential Record	242,000
---	---------

Note: President Trump is benchmarked against President Clinton's record with the assumption that, like President Clinton, President Trump will be in office for two terms.

SOURCES: BLS, DOL, HPS

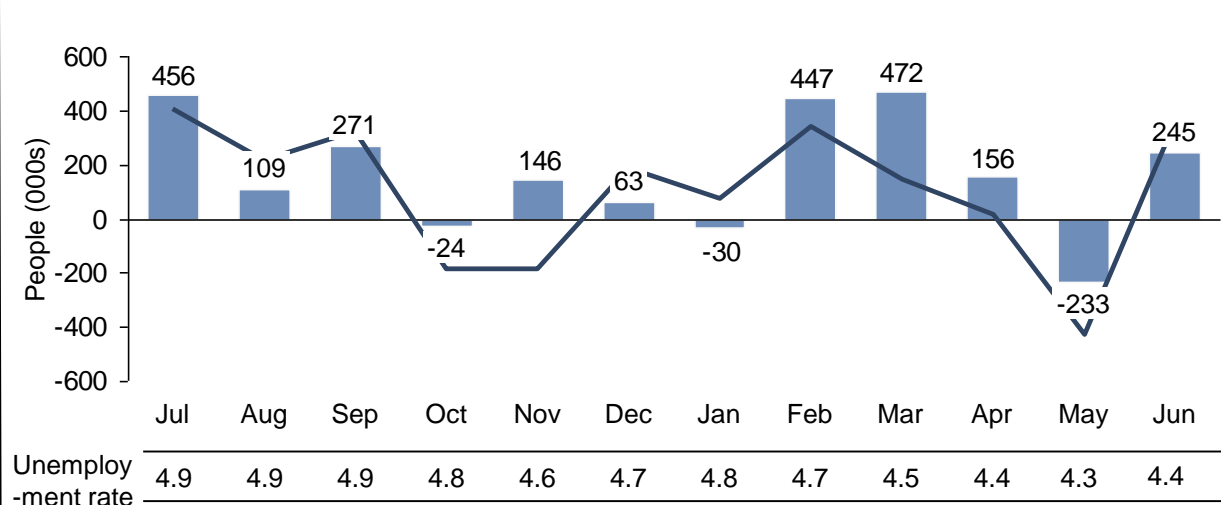
### Employer Survey (CES)

Original CES Survey Revised CES Survey Revisions



### Household Survey (CPS)

Employment Change Work Force Change



Note: The unemployment rate drops when the amount of new jobs (change in employment) is greater than the change in the labor force