



JOBS FACT SHEET

July 2017

+209 K

Predictions

ADP	178,000
Consensus (Dow Jones)	180,000

Jobs

	Current	Previous
Employer Survey	209,000	222,000
Household Survey	345,000	245,000
Unemployment Rate	4.3%	4.4%
U6-Unemployment Rate	8.6%	8.6%
4-Wk Avg UI Initial Claims	241,750	244,250
Long-Term Unemployed	1.8 million	1.7 million

Labor Force

	Current	Previous
Work Force Change	349,000	361,000
Participation Rate	62.9	62.8

Wages

	Current	Previous
YoY Percent Change In Avg Hourly Earnings	2.5%	2.5%
Avg Weekly Earnings	\$909.4	\$906.3

Analysis

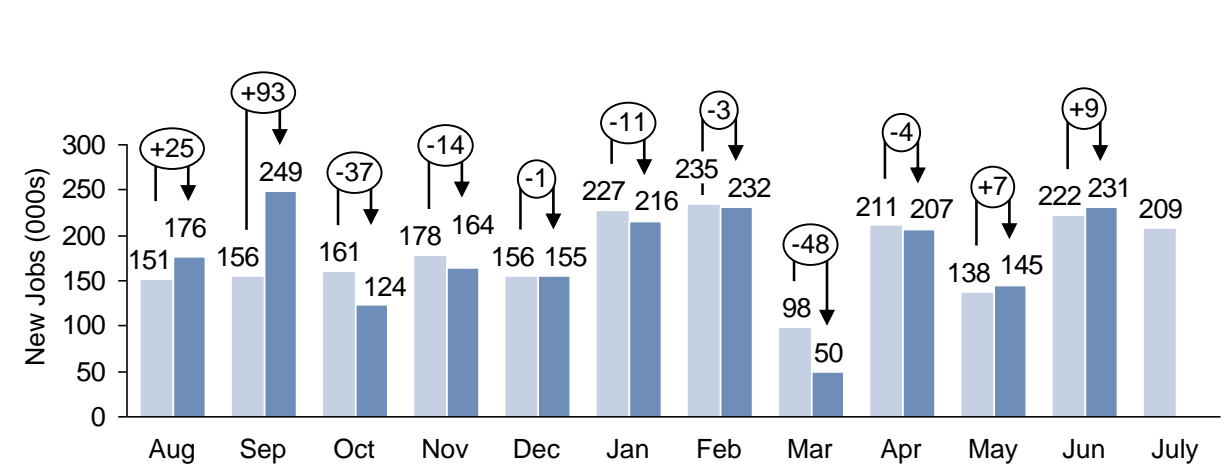
Change In 25-54 Employment-Pop Ratio Under Trump	+0.5
Net Jobs Added Under Trump	1,074,000
Average Monthly Job Growth Under Trump	179,000
Jobs Needed Per Month For Presidential Record	242,540

Note: President Trump is benchmarked against President Clinton's record with the assumption that, like President Clinton, President Trump will be in office for two terms.

SOURCES: BLS, DOL, HPS

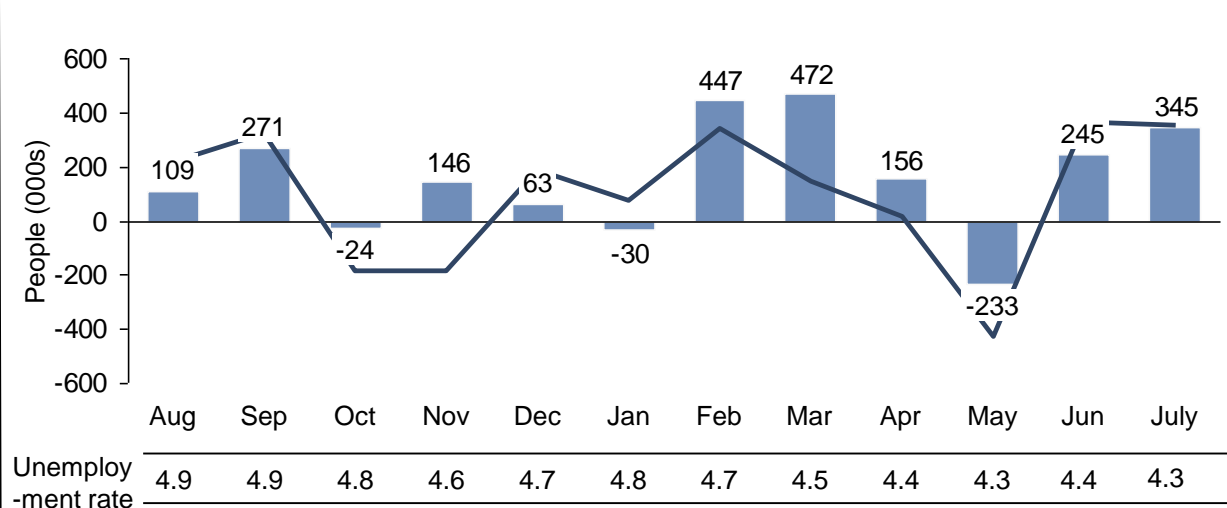
Employer Survey (CES)

Original CES Survey Revised CES Survey Revisions



Household Survey (CPS)

Employment Change Work Force Change



Note: The unemployment rate drops when the amount of new jobs (change in employment) is greater than the change in the labor force