



JOBS FACT SHEET

April 2018

+ 164 K

Predictions

ADP	204,000
Consensus (Dow Jones)	195,000

Jobs

	Current	Previous
Employer Survey	164,000	103,000
Household Survey	3,000	-37,000
Unemployment Rate	3.9%	4.1%
U6-Unemployment Rate	7.8%	8.0%
4-Wk Avg UI Initial Claims	221,500	229,250
Long-Term Unemployed	1.3 million	1.3 million

Labor Force

	Current	Previous
Work Force Change	-236,000	-158,000
Participation Rate	62.8	62.9

Wages

	Current	Previous
YoY Percent Change In Avg Hourly Earnings	2.6%	2.6%
Avg Weekly Earnings	\$926.00	\$924.60

Analysis

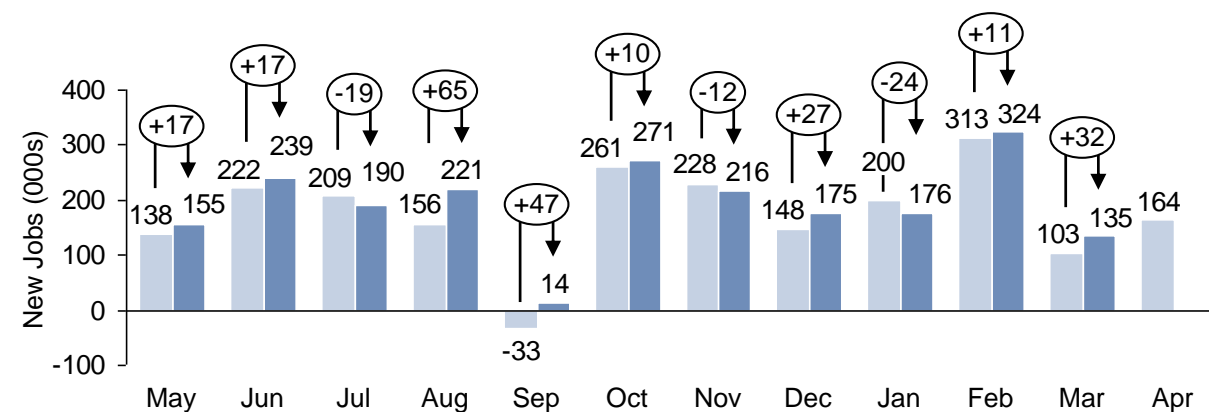
Change In 25-54 Employment-Pop Ratio Under Trump	+1.0
Net Jobs Added Under Trump	+2,728,000
Average Monthly Job Growth Under Trump	182,000
Jobs Needed Per Month For Presidential Record	249,100

Note: The CES/CPS data reflects both the originally reported number as well as the most recent revisions.

SOURCES: BLS, DOL, HPS

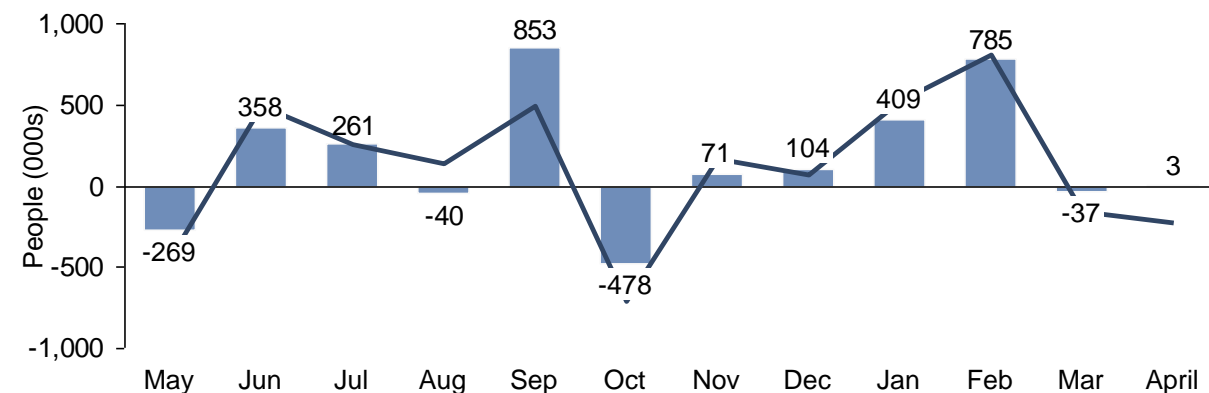
Employer Survey (CES)

Original CES Survey Revised CES Survey Revisions



Household Survey (CPS)

Employment Change Work Force Change



Unemployment rate

4.3	4.3	4.3	4.4	4.2	4.1	4.1	4.1	4.1	4.1	4.1	3.9
-----	-----	-----	-----	-----	-----	-----	-----	-----	-----	-----	-----

Note: The unemployment rate drops when the amount of new jobs (change in employment) is greater than the change in the labor force