



JOBS FACT SHEET

February 2019

+20K

Predictions

ADP	183,000
Consensus (Dow Jones)	180,000

Jobs

	Current	Previous
Employer Survey	20,000	304,000
Household Survey	255,000	-251,000
Unemployment Rate	3.8%	4.0%
U6-Unemployment Rate	7.3%	8.1%
4-Wk Avg UI Initial Claims	226,250	220,250
Long-Term Unemployed	1.3 million	1.3 million

Labor Force

	Current	Previous
Work Force Change	-45,000	-11,000
Participation Rate	63.2%	63.2%

Wages

	Current	Previous
YoY Percent Change In Avg Hourly Earnings	3.4%	3.1%
Avg Weekly Earnings	\$951.50	\$950.48

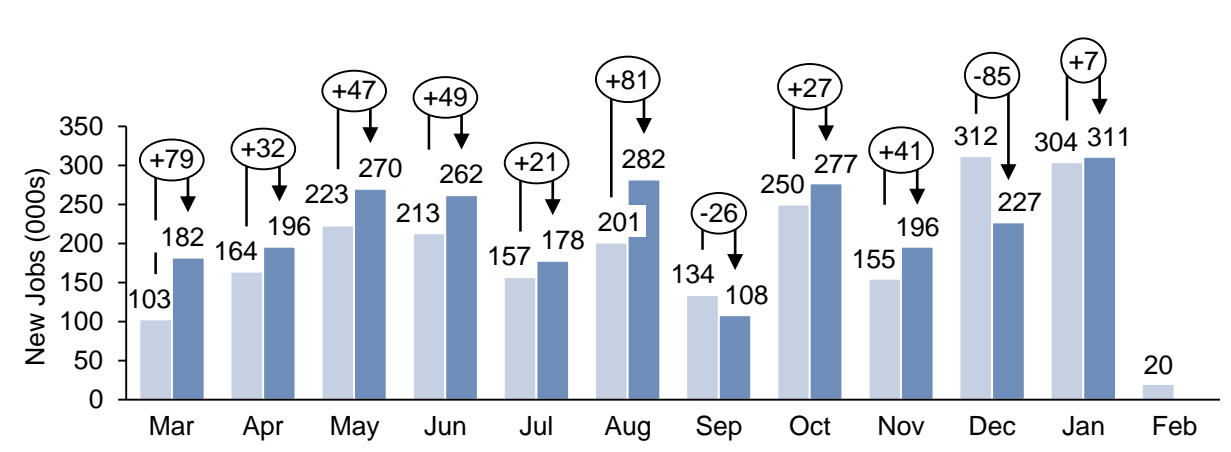
Analysis

Change In 25-54 Employment-Pop Ratio Under Trump	+1.7
Net Jobs Added Under Trump	+4,911,000
Average Monthly Job Growth Under Trump	196,440
Jobs Needed Per Month For Presidential Record	253,409

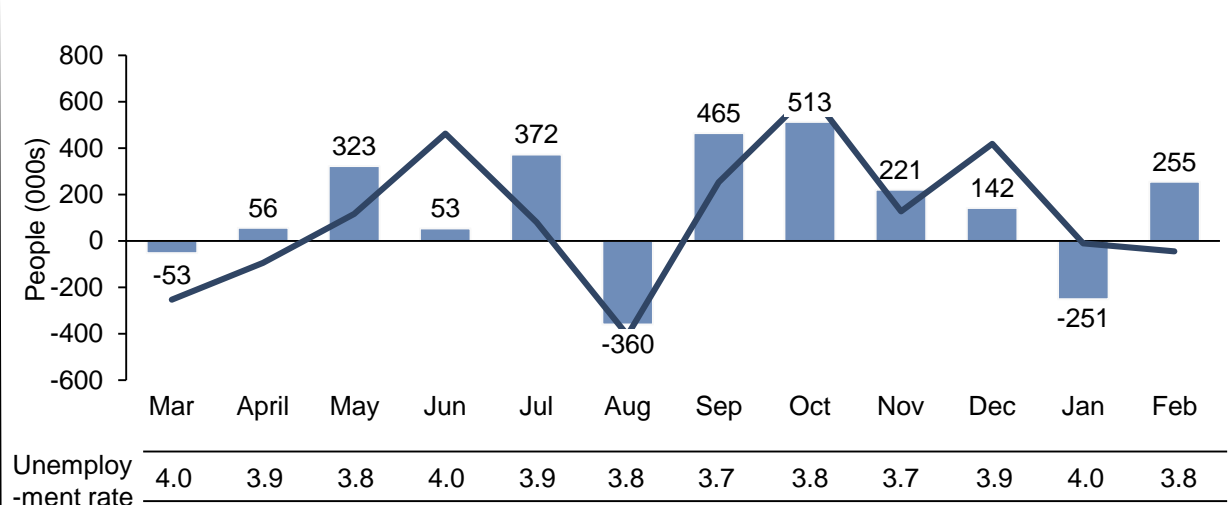
Note: The CES/CPS data reflects both the originally reported number as well as the most recent revisions.

SOURCES: BLS, DOL, HPS

Employer Survey (CES)



Household Survey (CPS)



Unemploy-ment rate

4.0	3.9	3.8	4.0	3.9	3.8	3.7	3.8	3.7	3.9	4.0	3.8
-----	-----	-----	-----	-----	-----	-----	-----	-----	-----	-----	-----

Note: The unemployment rate drops when the amount of new jobs (change in employment) is greater than the change in the labor force