



JOBS FACT SHEET

November 2019

+266K

Predictions

ADP	67,000
Consensus (Dow Jones)	187,000

Jobs

	Current	Previous
--	---------	----------

Employer Survey	266,000	128,000
Household Survey	83,000	241,000
Unemployment Rate	3.5%	3.6%
U6-Unemployment Rate	6.9%	7.0%
4-Wk Avg UI Initial Claims	217,750	219,750
Long-Term Unemployed	1.2 million	1.3 million

Labor Force

	Current	Previous
--	---------	----------

Work Force Change	40,000	325,000
Participation Rate	63.2%	63.3%

Wages

	Current	Previous
--	---------	----------

YoY Percent Change In Avg Hourly Earnings	3.1%	3.2%
Avg Weekly Earnings	\$973.18	\$970.77

Analysis

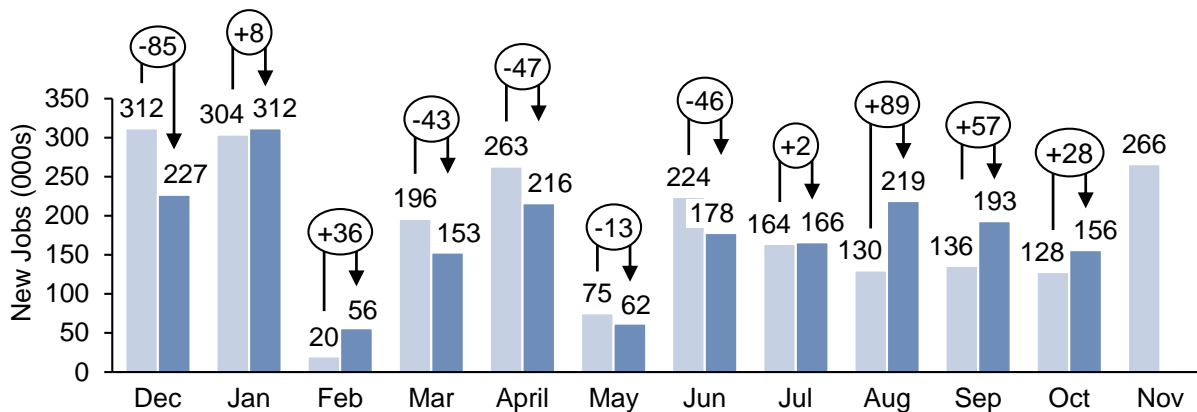
Change In 25-54 Employment-Pop Ratio Under Trump	+2.1
Net Jobs Added Under Trump	+6,557,000
Average Monthly Job Growth Under Trump	192,853
Jobs Needed Per Month For Presidential Record	263,645

Note: The CES/CPS data reflects both the originally reported number as well as the most recent revisions.

SOURCES: BLS, DOL, HPS

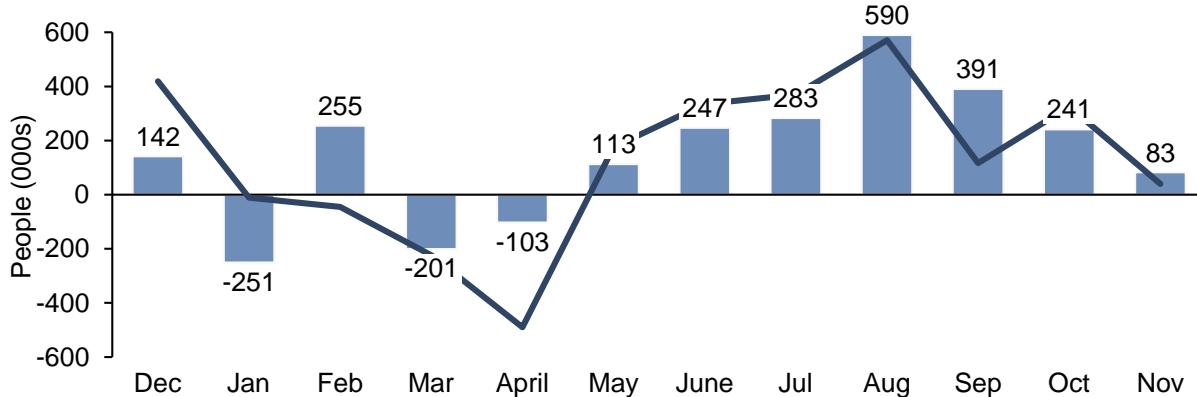
Employer Survey (CES)

Original CES Survey Revised CES Survey Revisions



Household Survey (CPS)

Employment Change Work Force Change



Unemployment -ment rate

Dec	3.9
Jan	4.0
Feb	3.8
Mar	3.8
April	3.6
May	3.6
June	3.7
Jul	3.7
Aug	3.7
Sep	3.5
Oct	3.6
Nov	3.5

Note: The unemployment rate drops when the amount of new jobs (change in employment) is greater than the change in the labor force